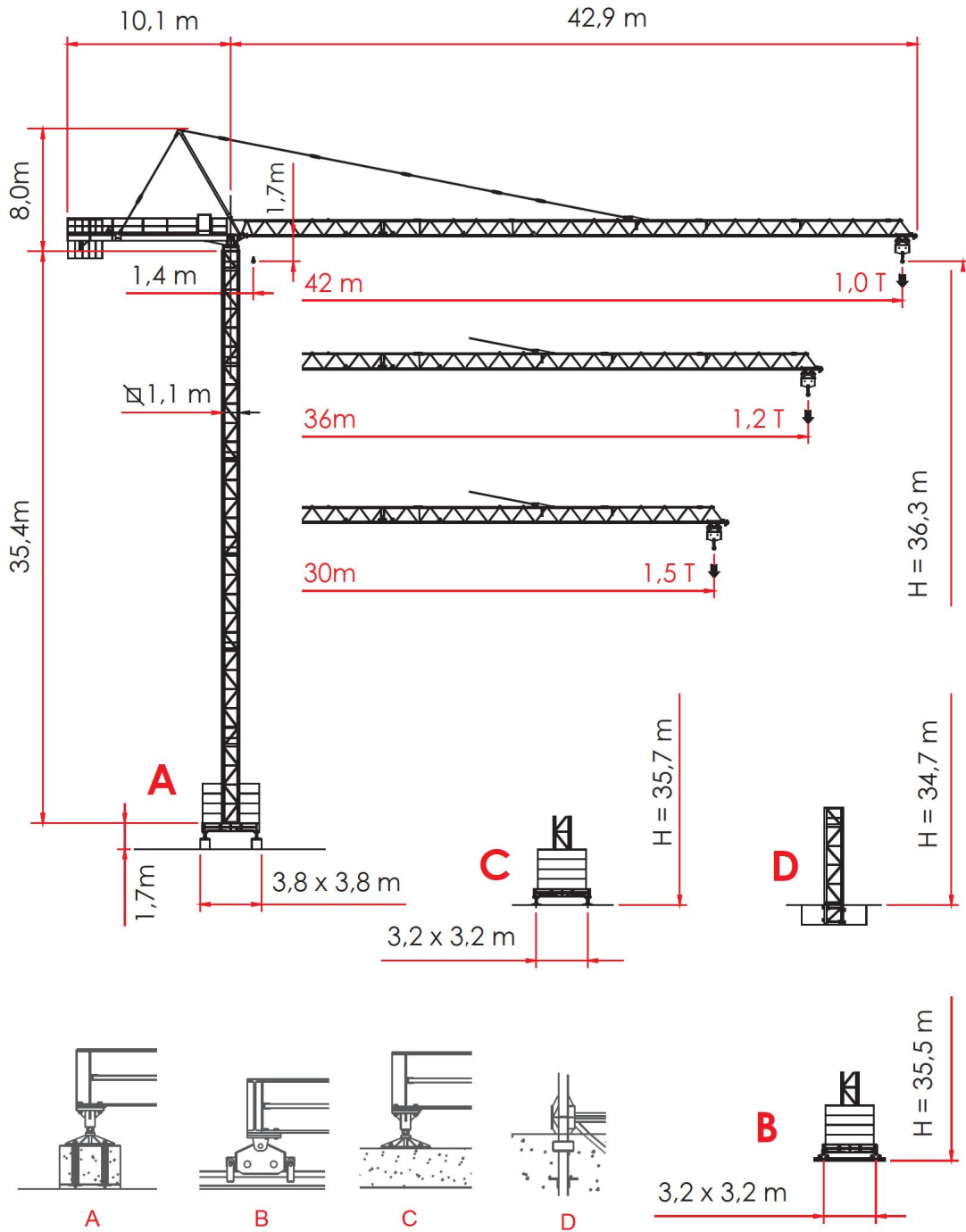


HAMMER HEAD CRANE





A4 FEM1.001

H = Height under hook
Altezza sotto gancio
Hauteur sous crochet
Altura bajo el gancho
Высота под крюком

LOAD DIAGRAMS _2.0 T _2.5 T

 DIAGRAMMA DI PORTATA / DIAGRAMME DE CHARGE UTILE / CURVAS DE CARGA /
 ДИАГРАММА ГРУЗОПОДЪЕМНОСТИ

Portata max / Max s.w.l. Charge maxi / Max. Tragfähigkeit		2000 kg. 			2500 kg. 		
Braccio / Jib Ausleger / Flèche	m.	30	36	42	30	36	42
Campo di portata max da Max s.w.l. range from Charge maxi de Max. Tragfähigkeit von	1,4 m a to à bis	23,3	23,2	23,2	19,3	19,2	19,2
Raggi (m.) Radii (m.) Portée (m.) Ausladung (m.)	12	2000	2000	2000	2500	2500	2500
	14	2000	2000	2000	2500	2500	2500
	16	2000	2000	2000	2500	2500	2500
	18	2000	2000	2000	2500	2500	2500
	20	2000	2000	2000	2400	2390	2390
	22	2000	2000	2000	2150	2150	2150
	24	1950	1940	1940	1950	1940	1940
	26	1770	1770	1770	1770	1770	1770
	28	1630	1620	1620	1630	1620	1620
	30	1500	1490	1490	1500	1490	1490
	32		1380	1380		1380	1380
	34		1290	1290		1290	1290
	36		1200	1200		1200	1200
	38			1130			1130
40			1065			1060	
42			1000			1000	

Braccio / Jib Ausleger / Flèche	(m)	30	36	42
Contrappeso / Counterweight Contrepoid / Gegengewicht	(t)	4,530	6,205	7,880
Composizione Composition Komposition	Tipo / Type	Quantità / Quantity / Nombre / Anzahl		
	A45	-	1	2
	B45	3	3	3